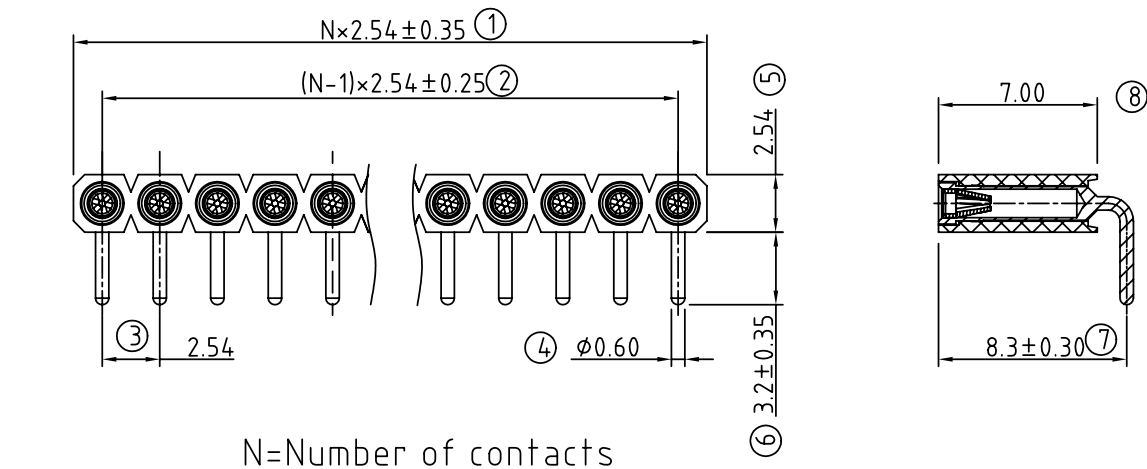


SIGN	DATE	DESCRIPTION	APPROVER
△			
THIS IS CAD DRAWING, DO NOT REVISE MANUALLY!!!			

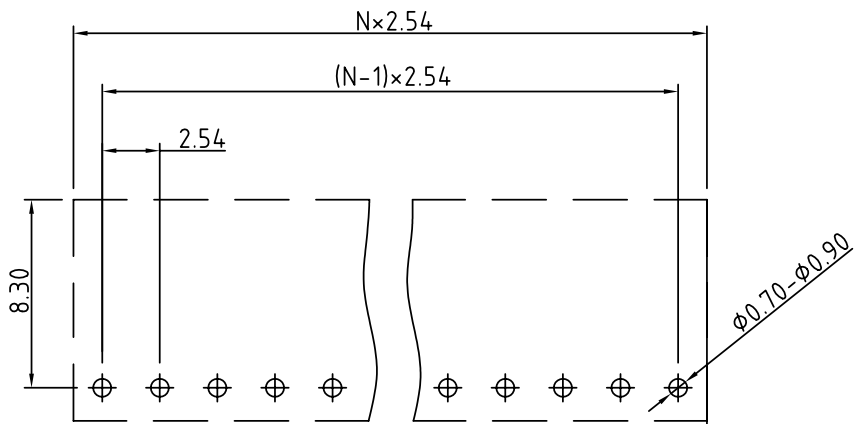
RC Series

Technical Data

Material:	
Pin (outer sleeve) :	Brass,machined, CuZn38Pb2
Clip(contact 6 finger):	Beryllium copper,heat treated or PHBZ
Plating(outer sleeve) :	Tin plated : 2um/80u"nickel,5um/200u"Tin
Gold plated:	2um/80u"nickel,Full gold
Plating(contact) :	2um/80 u"nickel,gold or Tin plating
Insulator body(housing) :	PPS. UL 94V-0
Electrical	
Current rating :	3 Amps/contact max.
Contact resistance :	4m /contact
Insulation resistance :	10000M at 500VAC
Rated voltage :	100VRMS/150Vdc
Operating temperature :	Gold plated: -55°C to +125°C
(Continuous)	Tin plated: -40°C to +105°C
Average insertion force:	<140g
With steel pin of Ø 0.6mm or SQ 0.64mm	
Average withdrawal force:	>25g
With steel pin of Ø 0.6mm or SQ 0.64mm	
Mechanical life:	min.200
Environmental data	
Solderability (IEC 60068-2-20. Ta) :	235°C, 2s
Resistance to soldering heat (IEC 60068-2-20. Tb) :	
-Through hole mount components :	260°C, 10s



N=Number of contacts



P.C.B LAYOUT

RC - XX 0 0 X 0 XXXXG

No.of contacts :01~40	←	XX	0	0	X	0	XXXXG	
pin plated: Code	Clip plated	Pin plated					0000	ROHS
0	Gold Flash	Tin 200u"					18H0	Clip 5218 HY ROHS
1	Gold 10u"	Tin 200u"						
2	Gold 30u"	Tin 200u"						
3	Tin 200u"	Tin 200u"						
4	Gold flash	Gold flash						
5	Gold 10u"	Gold flash						
6	Gold 30u"	Gold flash						

ANYTEK				CUSTOMER COPY			
				ALL RIGHTS RESERVED. REPRODUCTION OR ISSUE TO THIRD PARTIES IN ANY FORM WHATEVER IS NOT PERMITTED WITHOUT WRITTEN AUTHORITY FROM THE PROPRIETOR. PROPERTY OF ANYTEK TECHNOLOGY CO., LTD			
TITLE	RC 折彎 90° 單排 IC Socket 成品圖.						
PART NO.	RCXX00X0XXXXG			DWG NO.	8RC0001		
APPROVED	CHECKED	DESIGNED	DRAWN	CUST NO.			Tolerance
		Joanna 2006.01.20	Joanna 2006.01.20		UNIT: mm		X. ±0.50
					SCALE: NONE		X.X ±0.30
							X.XX ±0.10
							X* ±1*
				SHEET: 01/01	REV.: C		