

SIGN	DATE	DESCRIPTION	APPROVER
△	09.07.06	ADD Dimension : 4.20±0.10	Seamus
THIS IS CAD DRAWING, DO NOT REVISE MANUALLY!!!			

RC Series

Technical Data

Material:

Pin (outer sleeve) : Brass,machined, CuZn38Pb2
Clip(contact 6 finger): Beryllium copper,heat treated or PHBZ
Plating(outer sleeve) : Tin plated : 2um/80u"nickel,5um/200u"Tin
Gold plated: 2um/80u"nickel,Full gold
Plating(contact) : 2um/80 u"nickel,gold or Tin plating
Insulator body(housing) : PPS. UL 94V-0

Electrical

Current rating : 3 Amps/contact max.
Contact resistance : 4mΩ/contact
Insulation resistance : 10000MΩ at 500VAC
Rated voltage : 100VRMS/150VDC
Operating temperature : Gold plated: -55°C to +125°C
(Continuous) Tin plated: -40°C to +105°C

Average insertion force: <140g
With steel pin of Ø 0.66mm or SQ 0.64mm
Average withdrawal force: >25g
With steel pin of Ø 0.66mm or SQ 0.64mm
Mechanical life: min.200

Environmental data

Solderability (IEC 60068-2-20. Ta) :235°C, 2s

Resistance to soldering heat (IEC 60068-2-20. Tb) :

-Through hole mount components :260°C, 10s

RC - XX 1 0 X 0 XXXXG

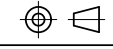
No.of contacts :02-80

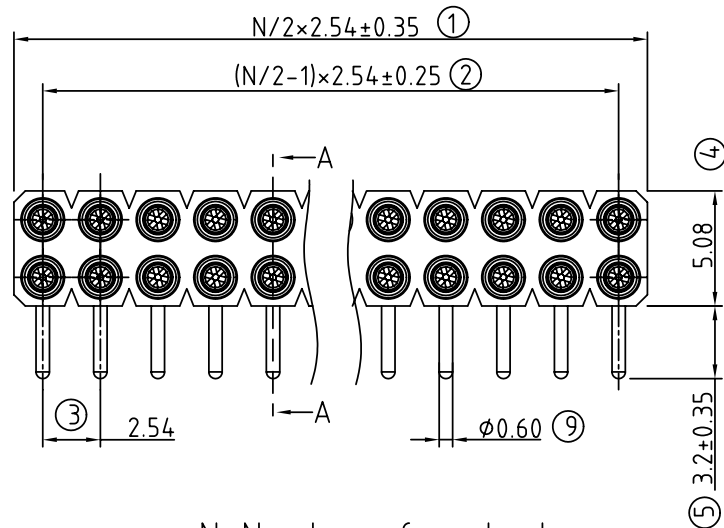
pin plated: Code	Clip plated	Pin plated			
0	Gold Flash	Tin 200u"		0000	Standard
1	Gold 10u"	Tin 200u"		18H0	Clip 5218 HY ROHS
2	Gold 30u"	Tin 200u"			
3	Tin 200u"	Tin 200u"			
4	Gold flash	Gold flash			
5	Gold 10u"	Gold flash			
6	Gold 30u"	Gold flash			

ANYTEK

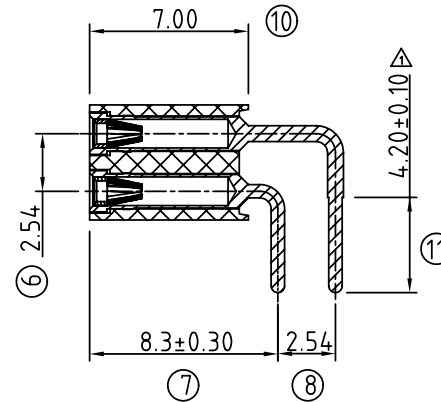
CUSTOMER COPY

ALL RIGHTS RESERVED. REPRODUCTION OR ISSUE TO THIRD PARTIES IN ANY FORM WHATEVER IS NOT PERMITTED WITHOUT WRITTEN AUTHORITY FROM THE PROPRIETOR. PROPERTY OF ANYTEK TECHNOLOGY CO., LTD

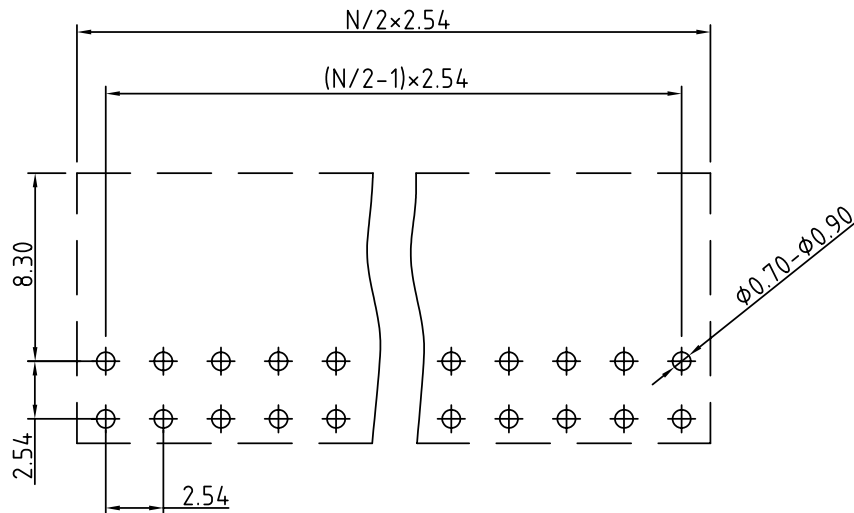
TITLE	RC 折弯 90° 雙排 IC Socket 成品圖						
PART NO.	RCXX10X0XXXXG			DWG NO.	8RC0002		
APPROVED	CHECKED	DESIGNED	DRAWN	CUST NO.	Tolerance		
	Seamus 2009.07.06	Seamus 2009.07.06	Joanna 2005.08.01		UNIT: mm		X. ±0.50
					SCALE: NONE		X.X ±0.30
					SHEET: 01/01		X.XX ±0.10
					REV.: D		X° ±1°



N=Number of contacts



SECTION A--A



P.C.B LAYOUT